



SAFER CORNWALL

Kernow Salwa

Safer Saltash Town summary 2023



Introduction

This profile provides a **picture of crime and community safety issues** for this area. It compares Saltash with the average for other large towns in Cornwall (towns with a population of 10,000 or more), described within this profile as “urban”. The profile also incorporates socio-economic, health¹ and community safety profiles that are available for this area.



key statistics

	<p>Current population of Saltash town area is 16,543</p>	<p>18% are aged 0-15 17% Cornwall / 19% England</p>
<p>People</p>	<p>25% are aged over 65 25% Cornwall / 19% England</p>	
	<p>1 in 5 live in the 20% most deprived neighbourhoods in England</p>	
<p>Vulnerable groups</p>	<p>14% of children are living in poverty (18% in Cornwall and 19% across England)</p>	<p>Education & skills</p>
	<p>2% of households lack central heating</p>	
<p>Housing</p>	<p>4% in Cornwall 2% across England</p>	<p>Economy</p>
	<p>21% of people have a limiting long-term illness</p>	
<p>Health & wellbeing</p>	<p>21% in Cornwall 17% across England</p>	<p>Access & transport</p>
		<p>16% of households do not have a car</p>
		<p>15% in Cornwall 24% across England</p>

Except where stated this profile provides information for **the geographical area representing Saltash Town as defined by [Local Insight \(communityinsight.org\)](http://communityinsight.org)**; comparisons are drawn with the average for other large towns in Cornwall (with a population of 10k or more, also described as “urban”) and Cornwall as a whole.

¹ Network area [Community Profiles](#) and [Health Profiles](#) are available from the Joint Strategic Needs Assessment (Public Health) website pages

Cornwall Overview

Overall **recorded crime has increased by 11%** with most types of crime having risen over the last 12 months. This was expected further to the lifting of COVID restrictions and local trends are generally in line with the national picture.

Cornwall's crime rate remains comparatively low, and we are ranked 3/15 in our national comparison group (Most Similar Group, MSG). The rate of crime is 53.6 per 1000 population which is 22% lower than the MSG average.

Rates of theft continue to be significantly lower than in other similar places in the UK, despite the increases over the last year as crime levels have re-established.

There were **8,930 incidents of anti-social behaviour (ASB)** reported to the police in the 12 months to 31st October 2022, equating to a rate of 15.6 incidents per 1000 population. The volume of reported ASB incidents is **27% lower than the same period last year** and has returned to around the same level as it was pre-COVID.

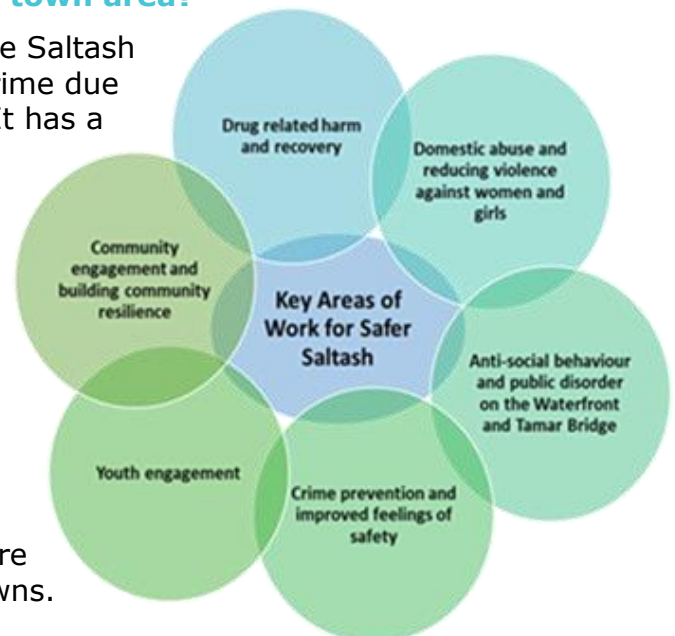
Reports of ASB to the police have **reduced across Cornwall over the last year** with substantial falls in rowdy nuisance neighbour incidents (down by 45%) and rowdy inconsiderate behaviour (down by 21%).

ASB continues to be a persistent headline issue in some of our larger towns. This requires ongoing multi-agency efforts to manage – ensuring that the people involved, who often have multiple vulnerabilities, receive **the right support, alongside appropriate enforcement action** to provide respite to local businesses and other residents.

What are the key trends for the Saltash town area?

Along with other large towns in Cornwall, the Saltash town focus area can have higher levels of crime due to the concentration of people living there. It has a population of just under 16,700. The **all-crime rate in Saltash is lower than the average** for other large towns in Cornwall.

- The crime rate in Saltash town has **remained fairly stable** over the last 12 months (October 2022). This opposes the increasing trend that we are seeing across Cornwall.
- There has been an increase in shoplifting offences and other sexual offences reported, but the numbers are low in comparison to other similar towns.



- We have also seen increase in alcohol related crimes as well as small increases in domestic abuse and crimes where the victim is aged under 18.
- The total number of Anti-Social Behaviour incidents has reduced by 24% which is similar to the reductions seen across Cornwall. The largest reductions can be seen in rowdy inconsiderate behaviour.

Crime / Incident type	Oct-22	Oct-21	Change n	Change %	Trend
Burglary Dwelling	8	18	-10	-56%	▼
Burglary Non-Dwelling	9	11	-2	-18%	▼
Criminal Damage	102	125	-23	-18%	▼
Other Offences	15	22	-7	-32%	▼
Other Sexual Offences	20	13	7	54%	▲
Other Theft	49	51	-2	-4%	▼
Possession of Drugs	20	21	-1	-5%	▶
Possession of Weapons	8	8	0	0%	▶
Public Order Offences	49	45	4	9%	▶
Rape	8	16	-8	-50%	▼
Robbery	2	3	-1	-33%	▼
Shoplifting	42	31	11	35%	▲
Stalking and Harassment	103	113	-10	-9%	▼
Trafficking of Drugs	7	10	-3	-30%	▼
Vehicle Offences	32	37	-5	-14%	▼
Violence with Injury	99	93	6	6%	▼
Violence without Injury	121	95	26	27%	▲
Victim under 18	97	91	6	7%	▲
Alcohol	132	97	35	36%	▲
Domestic Abuse	169	157	12	8%	▲
Hate crime	16	17	-1	-6%	▼
Grand Total	694	712	-18	-3%	▶
Rowdy/Inconsiderate Behaviour	140	184	-44	-24%	▼
Rowdy Nuisance Neighbours	61	63	-2	-3%	▶
Other	11	29	-18	-62%	▼
Street Drinking	14	20	-6	-30%	▼
Total ASB	226	296	-70	-24%	▼

Cost of living crisis and impact on crime and community safety

The pandemic left many households and businesses in Cornwall facing **financial difficulties**, as they struggled to manage increases in the costs of housing, energy, fuel and food. 3 key factors – energy prices, rising inflation and tax increases – are now contributing to a **cost of living crisis**, with Russia's invasion of Ukraine adding further uncertainty to global oil and gas prices and supplies.

We know from previous recessions, that **financial precarity drives a range of harms** related to crime and community safety and the impacts can be long lasting. How we manage these risks and support the most vulnerable in our communities will feature in the refresh of our Partnership Plan for 2023/24.

- **violence** (stranger violence is unlikely to be impacted). Wider **safeguarding concerns** around financial abuse and manipulation, diet and wellbeing issues. People fall through the gaps in services that are overstretched and cutting back – increasing **demand for crisis support** in increasingly complex cases;
- Anti-social behaviour may rise, with the increase in **rough sleeping** playing a small but visible part; **visible social disorder** drives wider feelings of unrest and **community tensions**; During a recession, people struggle with jobs and finances – scams and **frauds**, shoplifting, personal **thefts** and robberies increase, **black markets** and stealing to order escalates, and these markets are exploited by **organised crime**;
- **Drug and alcohol use increases** to cope with increased psychological distress, bringing with it all the associated **harms to health and family life and the costs to society**, and leaving communities vulnerable to exploitation by organised crime and violence;
- Based on previous recessions, interpersonal violence is likely to increase, specifically **domestic and acquaintance** potential increase in radicalisation, right-wing anti-immigrant narratives and **hate crimes**; increase in environment crime and nuisance occurrences;
- An **insecure home** is the most significant barrier to any successful or lasting engagement with services that could provide help and support and a **key factor in perpetuating reoffending**;
- Increase in **youth unemployment** rates has a long term impact. Young people who leave school during recessions are significantly more likely to become involved in crime than those who leave school while labour markets are more buoyant. The sense of a lack of future and loss of opportunities drive **risk taking behaviour**, including drug use and involvement in crime.

Safer Saltash Delivery 2022/23

Safer Saltash continues to meet virtually every 4 weeks to ensure that regular dynamic intelligence and updates about emerging community safety, crime and antisocial behaviour across the town is fed in and acted upon. This year we have:

- continued to address pockets of antisocial behaviour in the town through a balance of support and enforcement measures;
- targeted work at the Waterside to address specific concerns;
- supported the Police 'Have your Say' public engagement event in January;
- worked with civil enforcement partners to focus activity in hotspot locations;
- advocated for the implementation of a live monitored CCTV system in Saltash;
- worked in partnership with the 'Caradon Team Around the School' group to bring in improvements for young people and their families;
- facilitated the sharing of intelligence with organisations responsible for road safety.

Looking to 2023/24, Safer Saltash has planned an environmental visual audit in several areas in the town. This audit will involve a number of partners from a raft of different agencies, coming together to assess the physical space and agree actions to improve the area in line with situational crime prevention strategies. We will continue to work with the local youth provision organisations and the secondary school to support young people and address any concerns. We are planning a celebration of diversity and hope that the young people of Saltash will assist in coproducing the event/activity. We will be increasing face to face multi agency engagement at public events such as the Town Council led event 'Shop Your Town' on 2nd March and Saltash Pride celebration on 3rd June. #

What residents think

As part of the update of our new Partnership Plan, we invited local people to "Have Your Say" about the **community safety issues that matter** on a day-to-day basis in the local area and what could be done to improve things.

Our **on-line survey** was available via Cornwall Council's [Let's Talk Cornwall](#) in July and August 2022. We also held some **face-to-face engagement events** in the summer.

- Across Cornwall **83%** of people said they **feel safe during the day** in their local area; a **significant improvement** on last year's 61%. In Saltash this percentage was much higher although the sample size was small meaning percentage changes can be volatile;
- Of the 15 people who answered the survey only 1 felt unsafe after dark.

SAFER CORNWALL

Kernow Salwa